

**MODEL HOMES**

# Imaginative wall and stair treatments

Toronto Interior Design Group's Yanic Simard transformed three typical semi-detached model homes in Geranium Homes' Cardinal Point subdivision in Stouffville, starting from blueprints.

He created three unique looks to enhance small spaces: Country Chic, Traditional Tailored and Organic Modern. Here are five fabulous wall treatments and three stairway showcases.

**TRADITIONAL TAILORED**



TED YARWOOD PHOTOS

Why have only a landing when you can have an extra room? This staircase has been transformed into a stunning showcase by the installation of shelves to create a library. A large mirror centres the look, with a second mirror glued

on to the first. A narrow seat with a colourful throw allows a fine place to rest between floors. A Thomas O'Brien chandelier adds the finishing touch. Walls are painted classic grey, by Benjamin Moore.

**ORGANIC MODERN**



This maple staircase has thick treads and its look was enhanced by the installation of LED lights several feet apart inset into the walls. At the top of the landing, unseen, an image was projected on to the wall to make it look as if

there were a window with a tree outside. A fan on the projector simulated the movement of branches. The walls were painted Architectural White, by C2. The designer considered painting words on the risers, to tell a story.

**COUNTRY CHIC**



In this vignette, prints of similar sizes and both vertical and horizontal shapes were grouped from the bottom of the staircase to the top, to create a mini art gallery of sorts. Photos were hung on a wall painted Tapestry Beige, by Benja-

min Moore. You could use a common theme, or just put some of your favourite images together in a collage. The staircase is oak with white pickets. A stair runner, unseen, is black, beige and brown, with a black border.

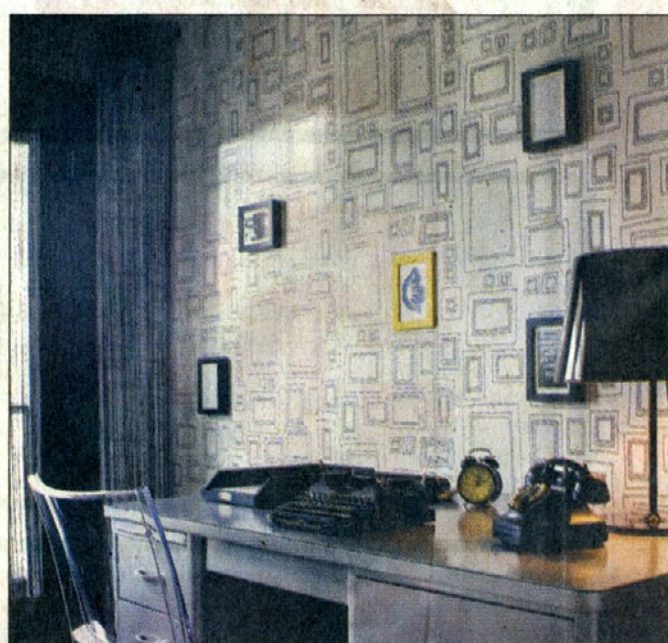
**BASEMENT**

A digital image of grass was taken, then blown up and turned into wallpaper. The floor space was then separated by use of a stretchy fabric and the back wall mirrored — both of which help maintain the feeling of spaciousness.



**OFFICE**

To enliven a home office, "interactive" wallpaper was installed. It is made up of a series of frames, which you can use to outline photos or documents or just hang other pictures on top of. If you are adventurous or just plain brave, you can write on it — but be careful. It won't wash off.



**BEDROOM**

In this master bedroom, a cherry blossom picture was digitized, then blown up and printed on canvas to create an unusual headboard. To complete the look, sheers were draped on each side of the bed.



**NURSERY**

What better way to welcome a daughter home than to dress a portion of one wall in pink wallpaper, framed by pink moulding, with these moulded plastic flowers, by Umbra, pinned on the wall. Tiny halogen "snowballs" add extra sparkle and pizzazz.



**LIVING ROOM**

To dress up a living room inexpensively, MDF was installed, with three-inch gaps, and painted white, to add texture. The horizontal pattern makes the small room appear larger. A walnut bench was added 18 inches off the floor, to complement the engineered wood floor, made of natural maple.



COMPILED BY DONNA LAPORTE  
TORONTO STAR